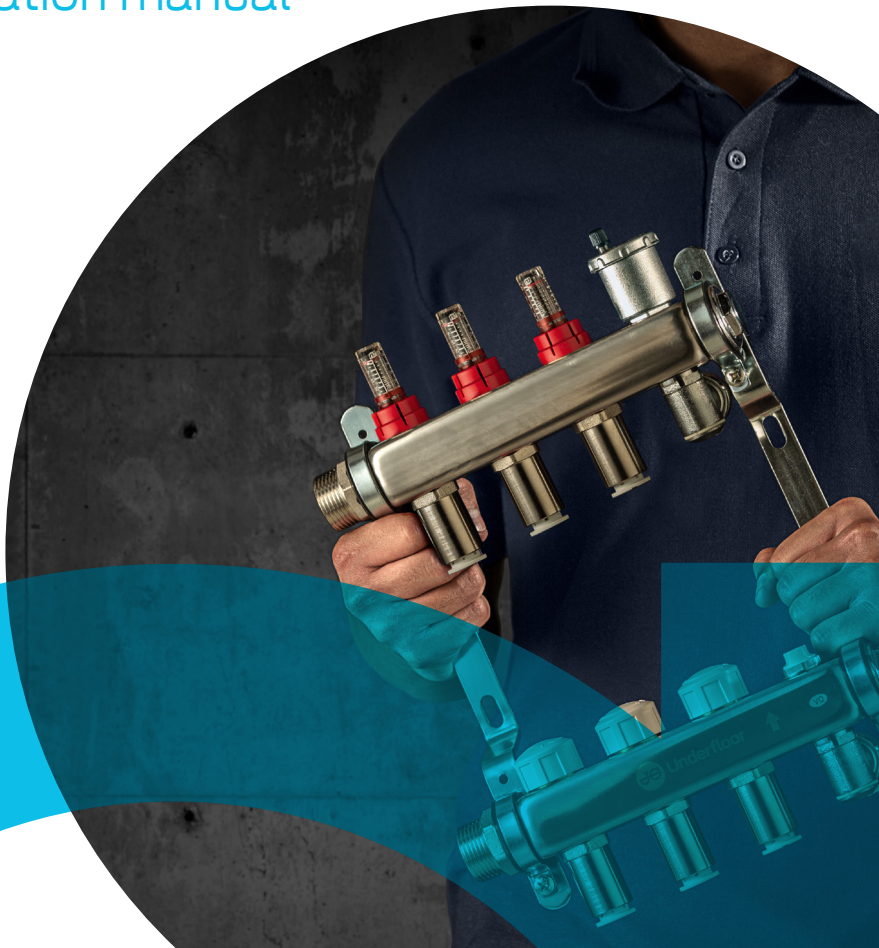




# JG Underfloor Manifold Extension kit

Installation manual



# JG Underfloor Manifold Extension kit

## Description

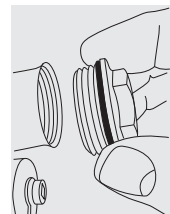
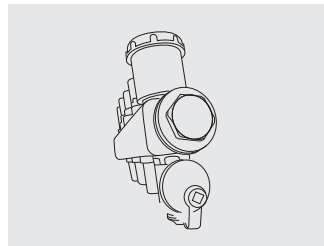
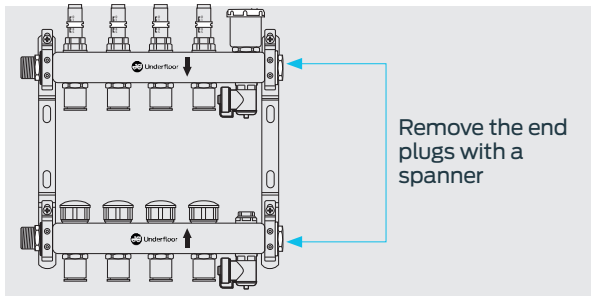
The JG UFH Manifold Extension accessory kit is designed so that an additional manifold can be bolted onto an existing one if systems need to be extended.

**Note** – When extending a manifold never extends beyond a cumulative total of 12 ports otherwise the pump pack may not be able to supply enough flow to service all the zones.

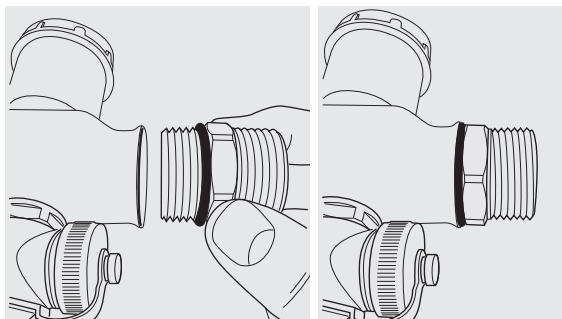
## Installation

To extend the manifold follow this procedure.

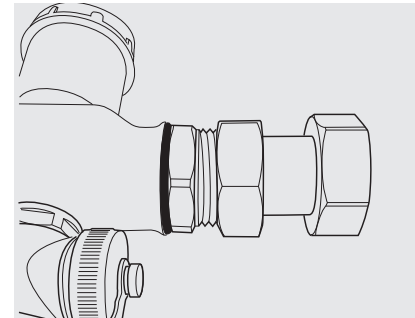
1. Unscrew the end plugs from the existing manifold.



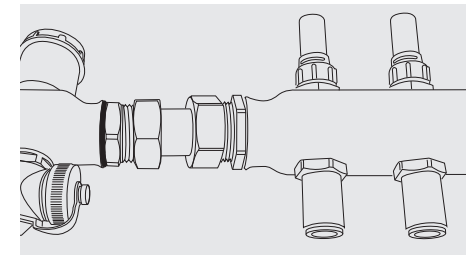
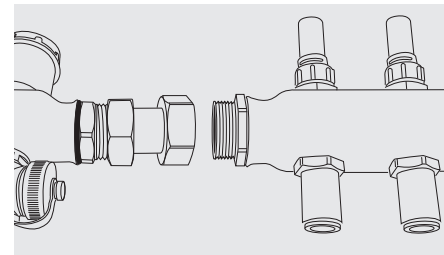
2. Thread in the 1" M X M adapters into both flow and return manifolds, taking care to make sure that the O-Ring is correctly set into the manifold body, tighten with a spanner or socket.



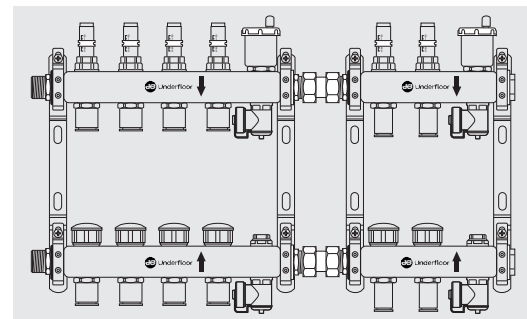
3. Connect the two way union to the male thread of the adapter that you have just screwed into place. Take care to insert the washer in between the flat faces. **It is important that the rigid end be connected to the threaded part and the free spinning nut be left to connect to the new manifold extension.**



4. Connect the free spinning nut to the inlet thread of the new manifold you are adding on making sure to include the washer for the flat faced connection.



5. Make sure that the extension manifold is fixed firmly fixed to the wall using its brackets and commission as per the installation and maintenance guide.





**Reliance Worldwide  
Corporation (UK) Limited**

Horton Road  
West Drayton  
UB7 8JL  
United Kingdom  
Tel: +44 (0) 1895 449233

AN RWC BRAND  
**RWC**