

# Pipe Insert

**Creates a rigid connection when fitting Speedfit pipe to a Speedfit or compression fitting**

## Overview

Always use a Speedfit Pipe Insert when connecting Speedfit pipe to a Speedfit fittings or when connecting to a compression fitting. Inserts play a vital role in providing extra support to pipework, ensuring that the ends of the pipe are kept nice and round, and minimising any loss of shape that can occur when cutting.

Designed and manufactured in the UK.

## Features & Benefits

- Enhances sealing for a securer connection
- Maintains structural integrity of the pipe connection
- Helps make the pipe more rigid when a side load is applied
- Suitable for hot and cold water and central heating systems



Product code	Description	Size	Bag QTY
TSM10N	Pipe Insert	10mm	50
TSM15N	Pipe Insert	15mm	50
TSM22N	Pipe Insert	22mm	25
TSM28N	Pipe Insert	28mm	10



50 year guarantee when used with JG Speedfit Layflat PB and PEX Barrier Pipes

# Pipe Insert

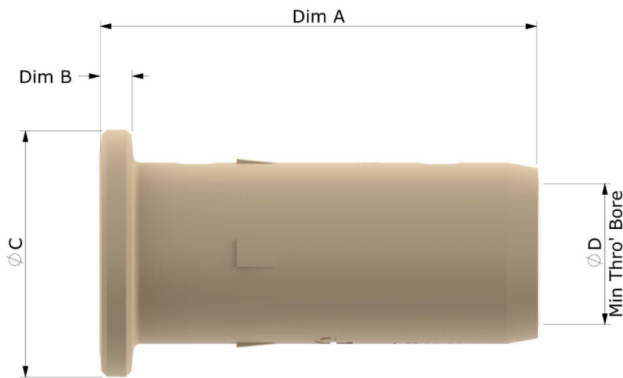
## Working parameters & specifications

Application	Usual working temperature °C	Maximum working temperature °C	Maximum working pressure, bar
Cold Water (indirect and direct mains)	20	20	12
Central Heating	82	105, short term malfunction at 114	3
Hot Water (including unvented cylinders)	65	95	6

## Materials

Body Polyethylene Oxide (Unfiled), Beige

## Dimensions – All measurements in mm unless otherwise stated



Product No.	Dim A	Dim B	Ø C	Ø D
TSM10N	16.0	1.1	9.0	5.3
TSM15N	26.0	3.1	14.9	9.1
TSM22N	29.0	3.5	21.9	14.0
TSM28N	40.0	3.8	27.8	18.2